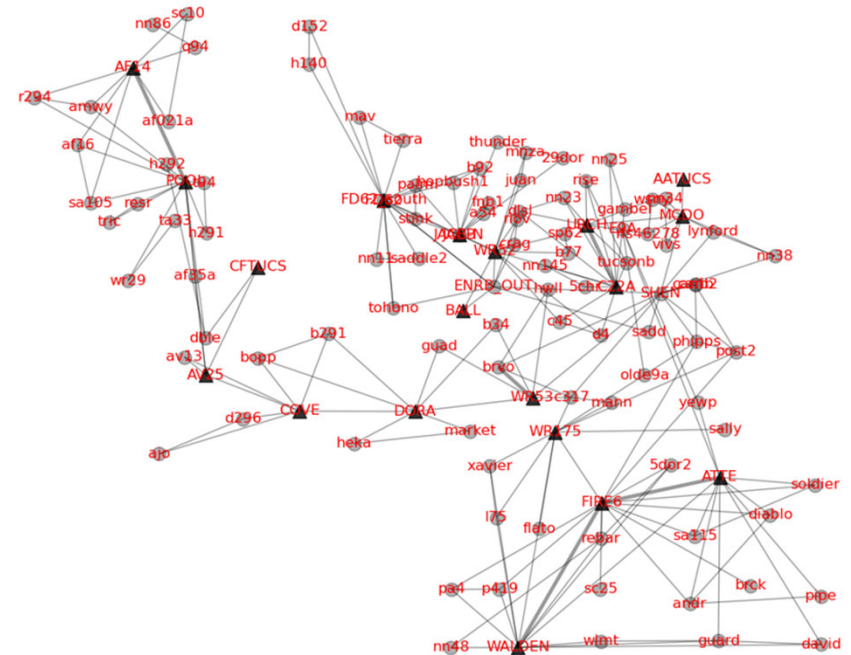
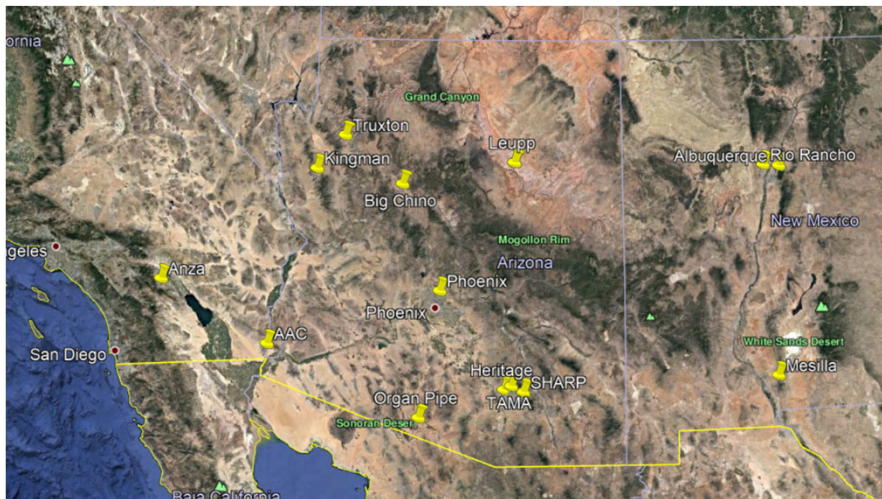




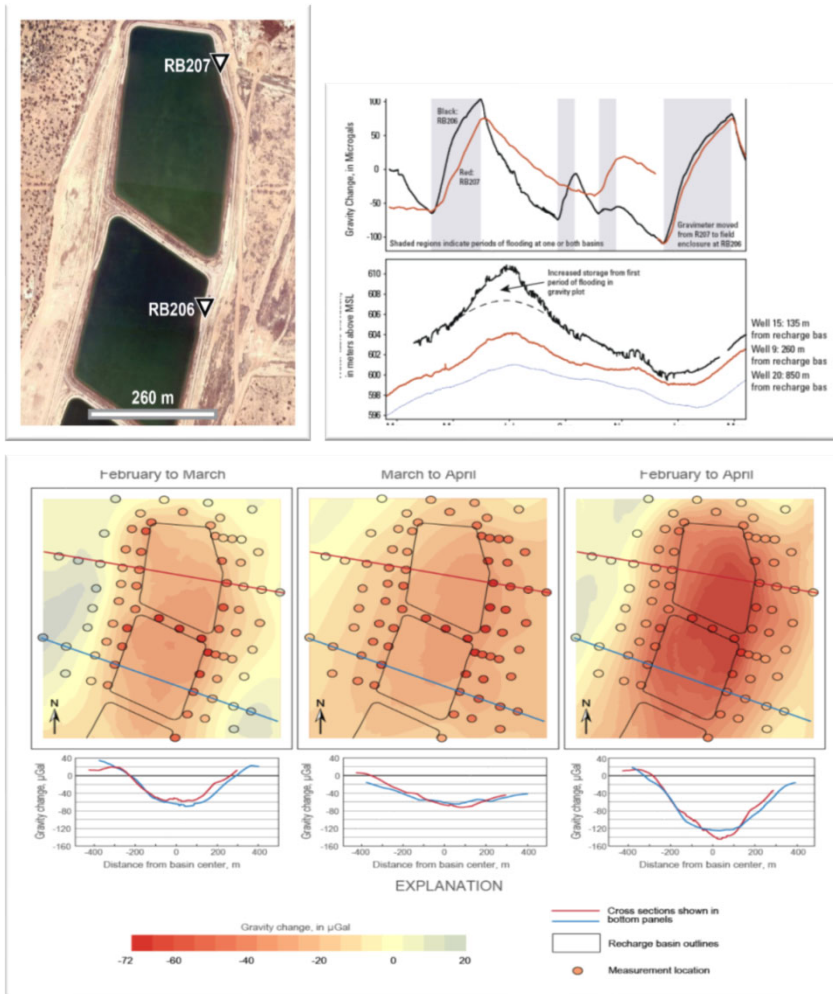
Southwest Gravity Program

- About 12 scientists and technicians
- About 10 projects at any one time
- Primarily combined absolute/relative
 - (1) A-10, (4) Burris meters
- About 10,000 absolute measurements since 2005

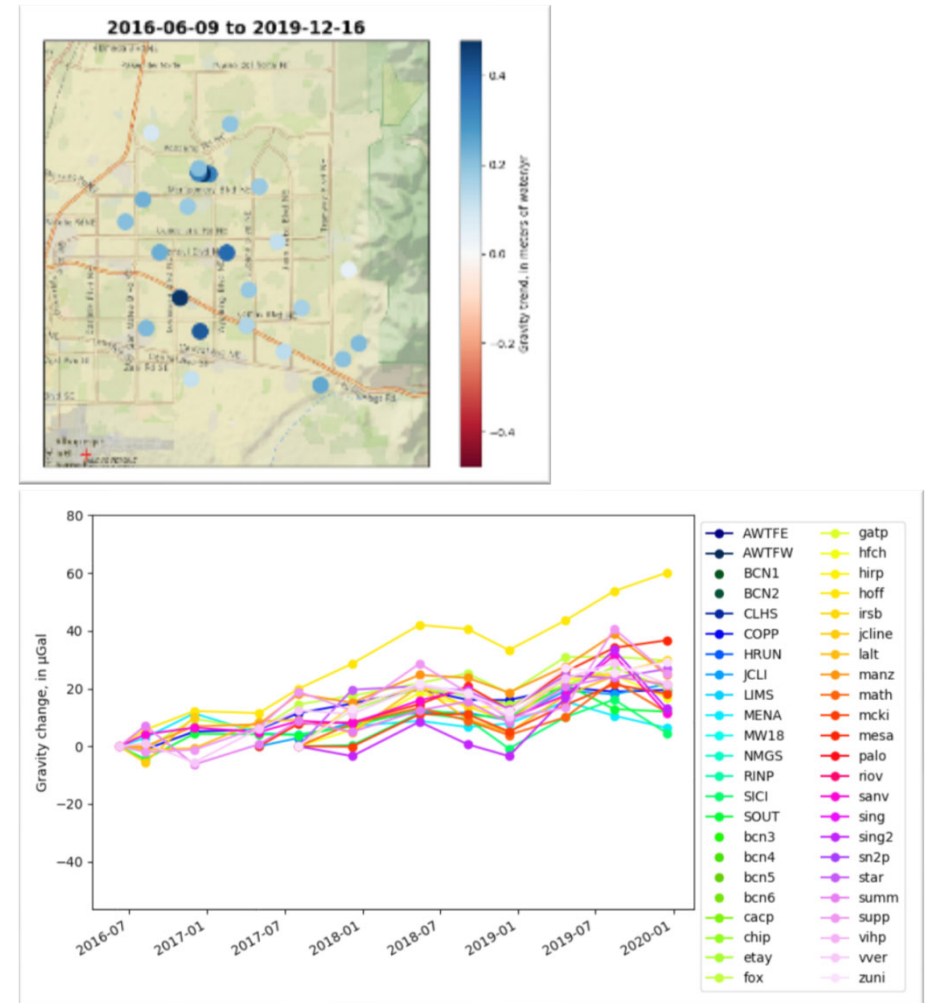


Tucson area network (150 stations, 20 A-10 stations)

Recharge monitoring, Tucson, AZ



Basin-scale monitoring, Albuquerque, AZ



Relevance to Quantum Gravimetry

- Long experience with terrestrial gravity measurements
- Large network of cooperators and potential demonstration projects, possible funding
- Research interest in the tradeoff between precision and quantity of measurements
- Familiar with AOSense effort
- Limited by current sensor technology